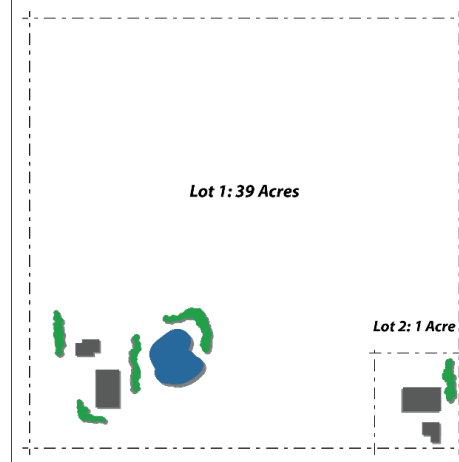


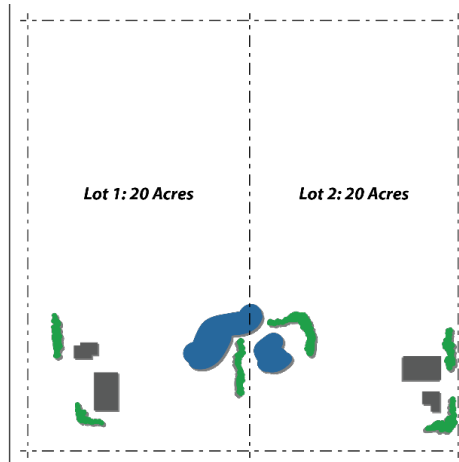
AGRICULTURAL RESIDENTIAL

The Agricultural/Residential land use category is intended for the continued preservation of agricultural land uses in Isanti County. Residential uses are limited to a maximum of two residential units per 40 acres or quarter/quarter. The new lot would have no maximum lot size but must be a minimum of 1 buildable acre.

Agricultural Residential Development Example #1:



Agricultural Residential Development Example #2:



2 UNITS PER 40 ACRES

2 UNITS PER 40 ACRES

NO MAXIMUM LOT SIZE

MEDIUM INTENSITY RURAL RESIDENTIAL

Similar to the Agricultural Residential land use category, the purpose of the Medium Intensity Rural Residential category is to preserve traditional agricultural land, while allowing limited residential development. There would be no maximum lot size for the new lots, but each must have a minimum of 1 acre of buildable area. This category is like the current standard but removes the maximum lot size of 3 acres.

4 UNITS PER 40 ACRES

4 UNITS PER 40 ACRES

NO MAXIMUM LOT SIZE

Medium Density Rural Residential Development Example:

